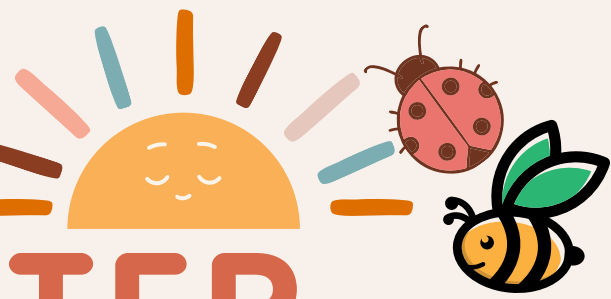




RECEPTION NEWSLETTER

SPRING 2



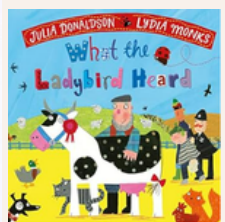
Welcome to Spring 2 2025!

We hope that you all had an enjoyable and restful half term holiday. Last half term was a great start to the new year and the children thoroughly enjoyed our 'Our Amazing World' topic. We have lots more learning to look forward to this half term and many exciting opportunities for the children planned..



Amazing Animals

We are very excited about our Amazing Animals topic this half term. We will be exploring and learning more about different types of animals in more detail each week, including pets. We will be comparing different environments and comparing them to where we live. We will think carefully about how animals are suited to different habitats. We will have a big focus on farm animals which will be very exciting and useful in preparing us for our upcoming trip to Hall Hill Farm later this term.



PE

PE for both Reception classes this term will be on a Tuesday and Thursday. We will be working with a sports coach from PE Sports Service every Tuesday to develop our gymnastic skills.



Dates for your diary

- W/C 10.3.25 - Book fair arrives on Monday for the whole week
- 31.3.25 & 1.4.25 - Parents Evening (information to follow on parentmail)
- 4.4.25 - Reception Trip to Hall Hill Farm
- 11.4.25 - Easter themed stay and play session

Outdoor Learning

The outdoor environment forms a key part of our Early Years Curriculum. We use our wonderful outdoor area every day throughout continuous provision time as we believe that learning outdoors is as important as learning in the classroom. Physical activity in the outdoors is crucial for bone, muscle and neurological development as well as lots of other core areas including emotional health and well being. The outdoor environment allows children to develop creativity skills and provides more opportunities for working collaboratively and expressively.

Now that the weather is warming up (slightly) we are excited to spend even more time outside. Every Wednesday morning, all children in Reception will spend the whole morning exploring and learning in our outdoor environment, including our whole school outdoor area. All children will need to have a coat and wellington boots in school as we will be outside all morning whatever the weather!

Hall Hill Farm

We are very excited to be visiting Hall Hill Farm this half term.

The trip is on Friday 4th April. More information, including permissions forms, have been sent via ParentMail. The children are already very excited about this trip (as are the staff!) and it will be a brilliant way to consolidate and expand on the learning through our topics this half term



Reception celebrate Lunar New Year 2025

We had a brilliant time celebrating Lunar New Year in Reception last half term. The children looked brilliant in their red themed clothing and had lots of fun taking part in a carousel of activities throughout the day, including food tasting and dragon dancing!



Should you have any further questions, please feel free to get in touch either by catching us on the door at home time or ringing/emailing the school office, who will pass on your queries. Alternatively, leave us a message on Tapestry and we will get back to you. With your continued support, I am sure that we will have another successful and exciting half term ahead of us.

Best Wishes,
The Early Years Team